

# NEOdis

lever dispenser



## Use of the NEOdis

Use the NEOdis lever dispenser for measuring out all types of smooth sauces.



1. Handle
2. Outflow
3. Doing element
4. Suction rod
5. Pump casing
6. Bayonet

**First use** with a new pail/container of sauce:

1. Put the dispenser into a pail of hot water.
2. Push down the handle a few times to pump the hot water through the outflow.
3. Remove the dispenser from the pail and allow the water to run out of the dispenser.
4. Place the dispenser on a pail/container of sauce.
5. Push the handle down.
6. Hold a finger against the end of the outflow and wait for the handle to move up again.
7. Repeat Steps 2 and 3 until the sauce comes out of the outflow.

**Then:**

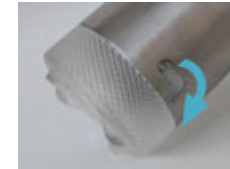
1. Hold a small container under the outflow.
2. Push the handle down to pump a portion of sauce into the container.

## Cleaning

Advice: clean the dispenser at least once a week and when changing the pail/container.

1. Remove the dispenser from the pail/container.
2. Rinse off any sauce under a hot tap.
3. Place the dispenser in a tub of hot water.

4. Push the handle down a number of times to pump the hot water through the outflow.
5. The bayonet on the pump casing is fitted by means of a bayonet catch. Remove the bayonet (hold the bayonet, turn it to the right and pull it down):



6. Place all the parts into the dishwasher and switch on the dishwasher.

## Adjusting the portion size

Each time you push down the handle, the NEOdis gives a standard portion. Reduce the portion as follows:

1. Remove the dispenser from the pail/container of sauce.
2. Rinse off any sauce with hot water.
3. Loosen the alignment screw under the lid with a screwdriver:



4. Push the handle down (halfway, or as far down as required).
5. Slide the alignment screw up against the lid and tighten it.
6. Place the NEOdis on the pail/container. The movement that can be made with the handle is now smaller. The sauce portion coming out of the outflow is also smaller.

## Troubleshooting

Problem	Solution
The movement made by the handle is smaller than usual.	The spring is faulty. Replace the spring.
The handle does not move back completely.	The spring is faulty. Replace the spring.
The sauce portion coming out of the outflow contains air bubbles.	The O rings are worn. Replace the O rings.
The sauce portions coming out of the outflow differ in volume.	The O rings are worn. Replace the O rings.

Use a ring spanner (No. 7), a screwdriver and an Allen key (No. 3) to replace parts.

## Spare parts

The following spare parts are available:

- Spare part set with Spring and 2 O rings (article number 90100002)
- Bolt and nut (to fit the handle).

Please contact Bereila if you need any spare parts.

## Replacing the bolt and nut of the handle

1. Remove the nut with a ring spanner (No. 7).
2. Remove the bolt with an Allen key (No. 3).
3. Fit the new bolt on the same side as the screw in the dosing element:



4. Tighten the nut onto the bolt.

## Replacing the spring

1. Remove the bolt and nut from the handle (see the instructions above).
2. Remove the handle.
3. **Please note:** there is a spring under the dosing element. Once the screw has been loosened, the dosing element can jump out:



4. Push the dosing element down while you are loosening the screw with a screwdriver:
5. Carefully release the dosing element. Remove the dosing element and the spring.
6. Fit a new spring.
7. Cover the spring with the dosing element and push it down carefully.
8. Tighten the screw on the dosing element. **Please note:** the end of the screw must touch the flat section on the dosing element designated for this purpose.



9. Install the handle.
10. Tighten the handle with the bolt and nut (see the instructions above).

## Replacing O rings

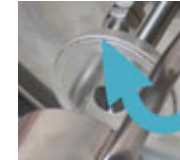
1. Remove the bolt and nut from the handle (see the instructions above).
2. Remove the spring (see the instructions above).
3. Loosen the alignment screw under the lid with a screwdriver.
4. Remove the bayonet:



5. Replace the O ring with a new one:



6. Carefully pull up the suction rod.
7. Replace the O ring on the suction element with a new one:



8. Put a little bit of grease on the two O rings (e.g. some mayonnaise).
9. Fit the suction element into the pump casing. Ensure that the top of the suction element is at the same height as the top of the pump casing:



10. Slide the alignment screw on the suction rod against the bottom of the lid and tighten it.
11. Put the bayonet back onto the pump casing.
12. Fit the spring and the dosing element.
13. Tighten the screw on the dosing element. **Please note:** the end of the screw must touch the flat section on the dosing element designated for this purpose.
14. Fit the handle and tighten it with the bolt and nut.

## Contact

Apparatenfabriek Bereila B.V.  
 Industrieweg 7a  
 NL-9781 AC Bedum  
 t.+31 50 30 12 297  
 info@bereila.nl  
 www.bereila.nl

# NEOdis

A Member of the  
 ASEPT Group

